

Directions for Use

Our Chromgobo®s are made using state-of-the-art laser technology and comply with the highest standards of quality. Chromgobo®s feature the best optical characteristics and can withstand high temperatures.

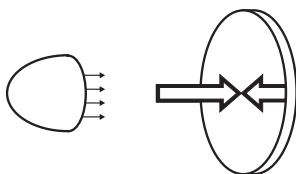
Safety Precautions:

- Never touch or change a hot Chromgobo® while the projection system is operating. There is risk of burn.
- Always insert the Chromgobo® completely into the specially designed holder and make sure that it is firmly fixed. Injury may occur if a Chromgobo® falls and smashes.
- Never touch the bundled light beam when you insert or remove the Chromgobo®. There is risk of burn.

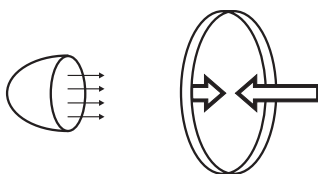
To ensure the durability of our Chromgobo®s it is essential to handle it carefully, following the instructions below:

- Avoid great differences of temperature. Never insert a cold Chromgobo® into a projection system which has already reached its operating temperature.
- The heat protection filter inside the projection system must not be damaged, otherwise the Chromgobo® may be destroyed by intense heat.
- Only insert Chromgobo®s which comply with the required size of glass gobos. Gobo sizes are described by the manufacturer of the relevant projection system.
- The Chromgobo® must be clean and free of fat and fingerprints when you insert it into a specially designed holder (it can be a gobo gate, gobo wheel or gobo ring adapter). The Chromgobo® must not be inserted into colour wheels or other accessories which were not designed for carrying Chromgobo®s.

- Make sure that the Chromgobo® fits precisely into the specially designed holder or adapter. Pressure on a single side causes inner tension and the Chromgobo® may split.
- When using a metal ring adapter which is necessary for some types of projection systems, take care that the Chromgobo® is not tilted and is free of tension.
- If Silicon is used to attach the Chromgobo®, the Silicon needs to dry for approximately one hour. Only insert the Chromgobo® when the Silicon is completely dry, otherwise acetic acid will be given off and may damage the Chromgobo®.
- The chrome-plated side of the Chromgobo®s must face the light source of the projection system. The chrome-plated side can be detected by holding your fingernail or any tool tip against the surface of the Chromgobo®.



Chrome-plated side: your fingernail is reflected close by the surface and without any distance. The chrome-plated side should face the light source.



Glass side: your fingernail is reflected with a little distance on the surface. The glass side should face away from the light source.

- In permanent use the Chromgobo® should be cleaned after 2-4 weeks (depending on the air pollution) in order to maintain the quality of the displayed image. Only use a smooth and dust-free optical cleaning tissue and optical cleaning liquid. Do not use any solvents or abrasives.

- Please take care that the fan of the projection system is working properly. Insufficient ventilation may damage the system and the Chromgobo®.
- If the Chromgobo® is used in a system that is not a DERKSEN® graphic projection system, the distance between burner/lamp and Chromgobo® must be correctly adjusted. Shift the burner/lamp on the optical axis until the Chromgobo® is out of the focus of the light beam.

Warranty and repair service is excluded if damages have been caused by improper use or handling and operation of the product which do not comply with these instructions.



ENLIGHTENING Australia Pty Ltd
49 Hilltop Road
Clareville NSW 2107

Phone: (02) 9918 7225
Fax: (02) 9918 7224
E-mail: gobos@enlightening.com.au

www.enlightening.com.au